

Dolphin Care - Africa

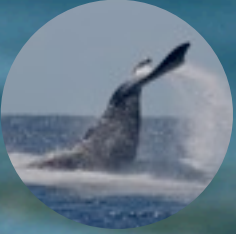
The monitoring of marine megafauna in the Ponta do Ouro - Santa Maria Region.
Within the Ponta Partial Marine Protected Area - Moçambique



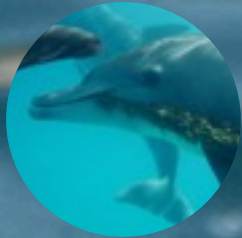
november to march



opportunistic



july to november



year long

Volunteer and Internship programs available in Ponta do Ouro - Southern Moçambique. Become a team member for a month and explore the realms of the wild dolphin together with a group of dedicated individuals who have been intrigued by the resident bottlenose dolphins since 1994!



organisation - volunteer - intern - information

"A vision without a task is but a dream, a task without a vision is a drudgery;
a vision & a task are the hope of the world".

Dear friend of the Dolphin!

Welcome to the wonderful world of wild dolphins, whales, turtles and occasionally whale sharks! We are thrilled to have your interest in DolphinCare~Africa's (Dca) project in Ponta do Ouro Moçambique.

For the past 12 years, we have been working to protect & conserve various marine animal populations & the surrounding environment. This South African organisation was registered as a non-profit organisation in 1998 after the success of Dolphin EnCOuntours. The importance of giving back to the dolphins led the way to the establishment of DolphinCare-Africa (Dca), a small SA based npo that is now currently undergoing registration in Moçambique. Some 4000 encounters have been recorded over the years, and 30 000+ images taken, validating the organizations longterm commitment to the study of the dolphins and the effects of tourism thereon. On 22 June 2000, the governments of Moçambique, South Africa, & Swaziland signed a protocol on the establishment of the Lubombo Transfrontier Conservation Area, which includes Ponta do Ouro. This marine & coastal TFCA links the Ponta do Ouro-Inhaca coastline of Moçambique with South Africa's iSimangaliso Wetland Park, a World Heritage Site. After 13 long years, on 14 July 2009, the Ponta do Ouro Partial Marine Reserve was proclaimed & includes the area from Moçambique's southern coastal border at Ponta do Ouro, to Maputo.

Dca contributed immensely to the establishment of the Partial Marine Protected Area; a longterm goal finally achieved thanks to the many reports and correspondence with government over the years.

Through presentations & displays at the DolphinCare Center, participants learn about dolphin behaviour, how to observe them in the wild, & much more. Our goal is that the experience is educational & inspirational, thus our departing guests seek out ways to have a more positive effect on their environment. As years have passed, our knowledge of & love for our finned friends & the marine environment has grown.

The project's long term data sets have successfully been used in obtaining abundance & identification information, & in studies of sustainable dolphin tourism in east Africa. It is a long-term study into how dolphins are affected by increased tourism & what measures should be taken to protect this species for generations to come. It is with this in mind that we push forward in our vision of protecting the marine environment, as well as exploring the inherent connection man & dolphin have had since time immemorial.

Over the years the project has evolved from solely monitoring wild dolphins, to monitoring & collecting data on local dolphin populations, migrating whales, nesting Leatherback & Loggerhead turtles, & whale sharks. Our facility acts as a central data collection point for said species & the information is distributed to relevant organisations, both locally & abroad. Although the project's primary focus is working with wild dolphins, it also offers the opportunity of meeting people from all walks of life who share a similar desire to protect & conserve our environment.

DCA recently faced a major setback on the 19 June 2010 when the Interaction and Research Center in Ponta do Ouro was devastated by a fire that destroyed both the facility and all the necessary research and education material. It is going to be a long, hard road to rebuilding and recovery however DCA remains committed to making a difference for the resident inshore bottlenose dolphins whose lives are affected by the increase of tourism activities within the area. Through the DCA we have been able to have a positive impact on the lives of this resident, inshore population of dolphins that co-exist within the dive, fishing & tourism community of Ponta do Ouro.

As would be expected, running a research center requires a lot of money, time, & dedication. It is with this in mind that we welcome you on the DCA volunteer program, which primarily is to attract like-minded people that would be dedicated to our cause & secondly, to generate funds for the purchasing necessary resources & equipment - especially now after DCA's loss.

We have included all the relevant information you will require to ensure your program with us is hassle free. Please contact us should you have any other queries. We look forward to sharing the magic of our dolphins with you and thank you in advance for your support.

For the Love of Dolphins!
Angie Gullan

Co-founder DCA

How it all began

The 28th December 1994 marked the day inter-species relations between man and dolphin began in Ponta do Ouro. Time, seemingly stood still when in the shallows of the bay a naïve and somewhat frightened 20 something city girl experienced moments of intrigue when coming face to face with creations most intelligent cetacean, the bottlenose dolphin. The complexity of their spirited existence could be heard in their chatter and the strange and penetrating sound of their sonar could be felt as they 'read' the shy being before them. Where they to know that this human – a being somewhat similar but in the same breath completely different to themselves would become a regular visitor to their home.

Periodic visits specifically aimed at observing this gregarious species soon saw the development of what was to be Africa's first permanently based Dolphin Interaction and Research Center. An initial baseline pilot study was undertaken to assess the frequency of cetaceans together with the sustainability of a dedicated marine mammal based eco-tourism project and by the late 90's under the guidance of various institutes and marine mammal experts Dolphin EnCOuntours had developed an interactive experience that aimed at creating a safe space where both dolphin and human could interact. A comprehensively designed dolphin program encompassing the specially created Dca in-water code of conduct and snorkeling guidelines together with in-depth information on behavior, species and other topics of interest effectively now balances science, spirit and the safety of both species. We are able to contribute valuable data that we collect while at sea (i.e. when facilitating encounters) & on land. All of the data collected is forwarded to the Natural History Museum in Maputo, Moçambique. Daily sighting logs have been maintained for the last decade. It is under the guidance of Dr. Almeida Guissamulo that we have been able to collect & correlate data captured over the years, yielding positive results for the need of conservation in this area.

Our goal is to encourage sustainable dolphin tourism resulting in the conservation of our most precious natural resource, the dolphins of Ponta do Ouro. DolphinCare~Africa is supported by the research contributions from volunteers, donations, grants and Dolphin Encountours who has been facilitating in-water experiences with the resident bottlenose dolphins (*Tursiops aduncus*). A one boat policy together with highly developed code of conduct that is based on 16 years experience, ensures minimal stress for the dolphins when encounters are taking place. This code of conduct is sighted as standard practice (Guissamulo, 2007:34) (Stensland and Särnblad, 2007:39) (Berggren and Coles 2009: 115) and has been recognised internationally as best policy while 'swimming' with wild dolphins. Encountours are guided by a qualified crew that include ecology skippers, marine biologist, volunteers and camera crew who ensure the continuation of the photo id program. The data and work undertaken on-board the dolphin eco-tourism boat Avalon, has been both published and presented over the years; *the Society of Marine Mammal Conference (Cape Town November 2007)* *the European Ceatacen Conference (Germany March 2010)* *the Africa Marine Mammal Colloquium (Cape Town May 2010)*.

The importance of giving back to the dolphins led the way to the establishment of DolphinCare- Africa.

The organisation works under a formal memorandum of understanding with the Natural History Museum of the University of Eduardo Mondalane in Maputo. Dca's research project - The Monitoring of Large Megafauna within the Ponta do Ouro - Santa Maria Region is permitted through DNAC (0010/2009). Avalon - the sea-going vessel is licensed under 090/inamar/tm/2008.

Project Benefits

- ✓ Ensure baseline data is collected & the home-range of resident dolphins is protected
- ✓ Promote long-term studies of marine life
- ✓ Data assists governmental decisions about protecting & conserving various species
- ✓ Help local Moçambicans understand the impact they have on their environment & implement ways in which the impact can be minimized
- ✓ Increase awareness among local populations & worldwide
- ✓ Deter poachers/illegal activities & encourage prosecution of offenders



Associates in Caring

- Natural History Museum, Maputo
- Universidade Eduardo Mondalane
- KwaZulu Natal Wild Life
- Turtle Working Group, Moçambique
- Cento Terra Viva
- Eyes on the Horizon
- Peace Parks Foundation
- Dolphin EnCOuntours
- Golo Agency Moçambique
- Society of Dolphin Conservation
- Oceanographic Research Institute
- ECOCEAN
- Sponsor: Senqu

Study Area of Ponta do Ouro

Dca's basecamp is situated in Ponta do Ouro on the southern most tip of Moçambique, bordering South Africa. To the south, there is a long line of forest covered dunes, 100m in elevation. At Ponta point, the coast swings to the west, creating a leeward protected bay. The area of the town is 10 km², & located 117 km south of Maputo (Bjerner & Johansson, 2001).

Prior to 1975, thousands of tourists flocked to Ponta's vast sandy white beaches where diving and fishing were the draw-cards. During the war tourism development came to a halt as the area became one of the front lines in the battle for independence, suffering considerable damage. After independence the friendly local population were eager to rebuild Ponta do Ouro to its former glory. Soon scuba diving pioneers rediscovered and mapped out the local reefs capitalising on the marine diversity and favourable diving conditions (good visibility, warm water temperatures and safe launching site). By the mid-90's, stories of unimaginable diving started to circulate in South Africa which led to the re-birth of Ponta do Ouro. Tourists began visiting Ponta in increasing numbers to witness first hand, the wealth of underwater species. Zambezi, tiger and whale sharks are sighted regularly, and the reefs are visited by loggerhead, leatherback and hawksbill turtles. Manta rays, blue spotted eagle rays and ribbon tail rays, together with a multitude of fish species, exist amid colourful soft and hard corals. With some 25 reefs in the area, the choices are many, from the shallows of Malongane, to the depths of Pinnacles and Atlantis. The reputation of southern Mozambique's, now famous reefs, has grown both within the diving and the recreational fishing sectors.

News of Ponta's fairly predictable point break also started circulating amongst the surfing community. As a result, in 1999, the 'Gotcha Experience Surfing Competition' was held in Ponta do Ouro. Subsequent years have seen further competitions, with the most recent being the Roxy Invitational in May 2009. An added delight for surfers are the resident dolphins that regularly join in on the wave-catching! Frequenting the shallow waters of the southern most bays, this particular population of dolphin has been studied and monitored since the mid-90's through the establishment of the DolphinCare Project.

Dotted along the coast, as far as Ponta Mamoli, one is able to find accommodation ranging from simple backpackers to up-market mansions built along the towering dunes that attain heights of 120m and are considered to be amongst the highest vegetated dunes in the world (Hatton 1995).

A number of community-based projects are active and, within Ponta do Ouro, one can find a multitude of interesting carvings at the craft market. Alongside the only petrol station in Ponta, the local weaving project PONKI was established to train the local population to earn a living through creativity.

In season, the area buzzes with people looking for good 'wining and dining'. A number of restaurants are within walking distance and offer a variety of choices, from seafood to pizza. Rands are readily accepted and it is advised to bring small currency, as change is sometimes an issue. Credit card facilities are available at some venues and shops, however not all. Weather is fair all year round, with summer temperatures peaking in the high 30's. Winters are nippy, but ocean going activities are offered year round. Just remember to bring a beanie, jacket and scarf!

The area is characterized by a warm sub-tropical climate. The warm currents from the Agulhas determine the temperature, the composition of the sea water &, indirectly, the north-south orientation of the coastline (Dardis & Grindley, in Bjerner & Johansson, 2001). The rainy season broadly coincides with the hot months, between November & March, though most provinces have some rain for seven to nine months of the year. Winter is July to September, but in the coastal areas the average temperature generally does not fall below 12 degrees celsius in the evenings. The continental shelf extends about six NMs offshore with the easterly seaward boundary extending to 3NMs. The predominant Agulhas current flows strongly south while inshore counter-currents flowing northwards occur commonly.

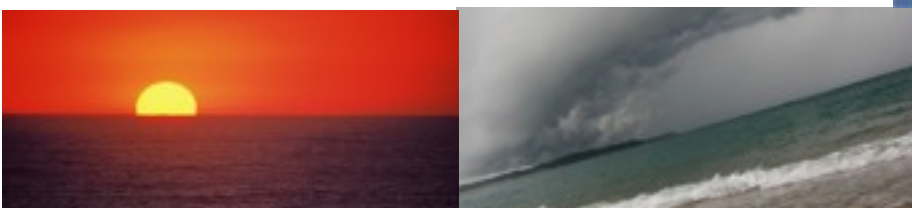
The prevailing winds blow parallel to the coast with the southerly component being the strongest and most frequent. Northerly and north easterly winds form the other major component of the wind regime.

The coastal water is oligotrophic (poor in nutrients), and terrestrial input to this stretch of coast is minimal as no major rivers enter the sea in the area.

Rainfall is in the region of 900mm per year, falling on about 110 days per year but mostly in January and February. The annual mean sea surface temperature for the area is 24.50C, ranging from 22.50C in winter to 26.40C in summer. The tidal cycle is semidiurnal (two high tides and low tides per day) and the tidal range lies between 2m and 2.4m (Kalk 1995). During the long civil war, the area was largely deserted. However, tourism has gradually returned to the area with it now being a famous South African holiday resort. It is the most accessible Moçambican beach town for South African tourists to visit. Previous population statistics (2003) were at an estimated 10 000.



Ponta do Ouro
"The Point of Gold"
S.26.50640
E.32.53347



About the Program

Both internships and volunteer programs are based on a 4 week stay and are designed for those that would like to gain more knowledge and field experience in the marine environment - with a focus on wild dolphins. The program is an extended stay with the dolphins, whales and turtles (depending on your chosen period) and incorporates sustainable dolphin tourism protocols as standard practice. Volunteers and interns are accommodated at a temporary camp in Ponta do Ouro while we re-establish and re-create the new DolphinCare Center which you will proudly be involved in.

The program takes a maximum of 8 participants.

Volunteers primary focus is working together with encounter participants and dolphins! Your time will be spent working on board Avalon, ensuring all participants get the best possible experience while in our hands. Volunteers help out with educational briefings, fielding questions, preparing and assisting participants in the water and working closely with our focal species. Avalon launches 1 - 5 times a day depending on season and volunteers will have the opportunity of collecting data, taking fin identification pictures, entering data and working with the reconstruction of cetaceans that have been collected through the Dca's Stranding Network.

Interns focus is to gain field experience with time spent on board Avalon on encounters as well as doing dedicated field trips - with the focus of assessing the northern and southern home ranges of our resident bottlenose dolphins. This aspect of the program may involve interns together with volunteers sleeping over at other sites to undertake both land and sea based observations. Interns are expected to collect and enter data on all species encountered as well as assist in the clipping and cataloguing of images for the photo id project. Interns are assisted by volunteers and Dca's mentors. Internships are designed to each participants requirements to ensure your objectives are met.

As tourism is quite seasonal, there are times where you can experience much down time. During peak periods though, we are in full swing and you can expect to work long, hot hours with extensive visitor & dolphin interaction. Participants will share the daily routine, with each person designated a specific job per time period. Volunteers may also be asked to assist with animal strandings, turtle monitoring, & guest educational sessions. The program caters towards individuals wanting field experience, tourism experience, or simply a career break. Anyone aged 18 and older is welcome. The first week of the program will be spent working closely with team members in training & learning set protocols, in order to maintain the integrity of the project.

Regular talks are scheduled & volunteers are requested to get involved. This is a wonderful opportunity to learn about dolphins & the marine environment in general. Swim ethics & behaviour presentations cover dolphins from a wild perspective. Co-founder, Angie Gullan's presentation ensures an all-round understanding of ongoing research & the conservation status of dolphins.

Peak times include weekends, which are Thursdays to Sundays. Peak seasons generally coincide with school holidays & are March to April, September, & December to January. Low season ensures plenty of time for surfing, kite surfing, or just plain old relaxing!



Please note:

*Start time in summer is 5:00 AM & in winter is 6:00 AM (schedule to shift accordingly). Please ensure you are on time.

*Time & program may change due to group & season.

*Volunteers will not be at sea for every field trip (but will be on the number outlined in the chosen option).

*Land-based duties will be subject to projects at hand.

The Projects

*Additional training, for specific projects, will be provided as required

Boat & Land based marine mammal monitoring

Information and data are collected for every cetacean and whale shark sighting. The information is in regards to abundance, location, behaviour, identification, associations, weather and conditions. In the winter months, we see migrating whales & in summer months, an increase in whale shark sightings. Land-based observations are conducted to gather information about the dolphins' travel patterns (when we cannot view them at sea). Information collected includes direction of travel, area observed, behaviour, group size, etc.

Photographic fin Identification

Our dolphins have been photographically documented since 1996, resulting in a catalogue of some 200 individuals in our 40 km area. The project allows researchers to determine abundance, movement, behaviours, & social structures of this population. Photos are taken while at sea, then moving them into the image bank where they are clipped, saved, matched to the id catalogue, & then filed accordingly. This process is a long & laborious task, requiring time & even more patience.

Whale shark monitoring

When possible, the individual is sexed, & scars/unusual markings, & left & right side pigmentation patterns are photographed. Data & photographs are recorded & sent to an international data base that has been developed by ECOCEAN.

Turtle monitoring

This program runs between November & March and involves monitoring nesting females & hatchling sites. Local monitors & volunteers ensure the collection of data & tagging of nesting females. Working together with WWF Moçambique & the Turtle Working Group Moçambique, species monitored include Loggerhead and Leatherbacks turtles.

Data entry

All data obtained in the field needs to be entered into a central data base. This is a standard Excel workbook.

Beach Clean-Ups

Regular clean-ups are conducted. All debris is collected, recorded and counted. During 2009 the project collected: 341 bags with a total weight of 1 749kg's. Total number of items collected: 12509, total hours spent in collection & 'tallying up' : 17 and ½ hours

Stranding Network

One of Dca's tasks is to handle any stranded animals that come ashore. Once a report is received, dca crew contacts the relevant authorities and goes to site. Here the animal is measured and all the relevant data is collected. Depending on size the animal is then removed to a site for further specimen sampling and de-boning. The animal is then buried for a set period of time and later excavated for reconstruction. In the past we have worked with striped dolphins, humpback whales, true beaked whale, whale sharks, pygmy sperm whale, spotted dolphin, melon headed whale, spotted dolphin and turtles. Many of our specimens were unfortunately lost during the fire - however we still have a number in the ground that now need to be excavated.

In-water monitoring

In-water monitoring is undertaken on all launches. Once volunteers have some experience they will be asked to fulfill specific tasks while in the water with the dolphins ie:- mother/calf counts.

Adoption Program

Dca has an adoption program whereby the project can adopt one of our Dolfriends©. Updated records and images are sent to adoptees as well as regular newsletters.

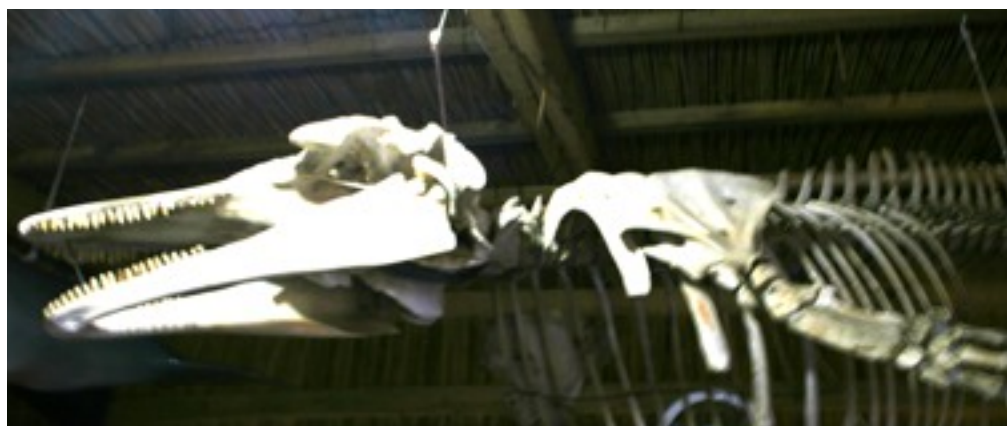


Time

A Typical Day @ Dca.

5:15 - 6:00 (Field Trip)	Participation preparation - sign in, safety and ecology briefing, gear allocation and field trip.
6:00 - 7:15	Data entry, special projects, land based observations
7:15 - 8:00 (Field Trip)	Participation preparation - sign in, safety and ecology briefing, gear allocation and field trip.
8:00 - 9:15	Data entry, special projects, land based observations
9:15 - 10:00 (Field Trip)	Participation preparation - sign in, safety and ecology briefing, gear allocation and field trip.
10:00 - 11:15	Data entry, special projects, land based observations
11:15-12:00 (Field Trip)	Participation preparation - sign in, safety and ecology briefing, gear allocation and field trip.
12:00 - 13:15	Data entry, special projects, land based observations
13:15-14:00 (Field Trip)	Participation preparation - sign in, safety and ecology briefing, gear allocation and field trip.
14:00 - 16:00	Data entry, special projects, land based observations
14:15 - 17:00	Mondays & Thursdays - Behaviour & Species Introduction & Snorkeling for Encountour Participants
20:00 - 12:00	Turtle monitoring with local monitors

You may be asked to prepare and present information to both the community and other resorts in the area.



Desired Skills

- ✓ Fluent in English, Portuguese a bonus.
- ✓ Computer literate (microsoft & applemac excel)
- ✓ Good people skills
- ✓ A willingness to work as a team
- ✓ Not afraid of hard work & in good physical health
- ✓ Comfortable on/around the ocean
- ✓ Comfortable with public speaking/presentation

Planning before you come.

The project operates year-round with programs lasting four weeks. We will generally start each four week program on the first Monday of every month, each holding a maximum of eight participants. Additional weeks can be arranged upon request. Bear in mind, when deciding on your period of volunteering, December to February is summer, hot & humid; & June to August is cooler (nights a brisk 10-12 degrees), but drier. Remember our other special species too. Humpback whale migration July to November and turtle season November to March.

Travel Documents

You will need a valid passport & a Moçambican entry visa. Some nationalities can obtain a visa at Moçambican border posts. Please check with a travel expert for requirements for your country. A 30 day visa-on-arrival costs approximately US \$25. Alternatively, longer visas can be obtained from your nearest Moçambican embassy or consulate.

Currency

The local currency in Moçambique is the Meticals, but the South African Rand (ZAR) is accepted in many places. Many vendors accept VISA & MASTERCARD, with a surcharge. Euros are not accepted.

Malaria

Ponta do Ouro is located within a malarial zone. There have however been no confirmed reports of malaria over the last 16 years. A couple of bottles of mosquito repellent & a mosquito net seem to do the trick (mosquito net not provided), however it is up to you as to whether you take anti-malarial medication. There are also various homeopathic alternatives available.

Medical Insurance & Facilities

There are no hospitals, doctors, or chemists in Ponta. The closest hospital is in Manguzi, South Africa, located just across the border (with border hours 8am to 5pm). Arrange vaccinations & travel medical insurance prior to arriving. Bring a small first aid kit & any necessary prescriptions for the duration of your stay. Bring your own motion sickness medication if you have a tendency to be sea sick.

Communication

There are no land lines in Ponta so a mobile phone & Moçambican SIM card are necessary. Moçambican SIM cards can be purchased in Maputo & Ponta do Ouro. Limited internet access is available on site at the facility & will be made available to you for a set period once a week.

Transport

The easiest way to reach the facility is to fly into Maputo. You may choose to stay a night or two & experience the Rhythms of Maputo at Fatimas Backpackers email: fatimas@tvcabo.co.mz www.mozambiquebackpackers.com Phone: +258 (0) 82 4145730 or +258 (0) 82 3070870. A stop here will give you time to stock up on necessities for your trip down south, exchange local currency (Meticais), purchase a SIM card for your mobile phone, etc. The road trip from Catembe to Ponta is ~120km, but seeing as the roads are sand & it is 4x4 territory, it can take up to 4 hours. Private, return transfers can be arranged at ~US\$250. Flying into Johannesburg or Durban is often cheaper. Both routes to the border are via tarred roads. The trip from Durban takes approximately 4-5 hours & from Johannesburg, anywhere from 8-12 hours (depending on road work). Again, lift opportunities can sometimes be arranged from Johannesburg & Durban. Please ensure you leave plenty of time to make the border, as it closes at 5pm.

What to bring

- Costumes/beachwear, towels, plenty of sun block, snorkel, mask, & fins
- Full wetsuit in winter months; shortie or boardies & a rash guard in summer
- Computer, binoculars and camera's.
- Sunglasses (polarized are better for the ocean)
- A light rain jacket or windbreaker (for the boat)
- A hat (a beanie & scarf in winter months)
- June-October warm clothes are necessary (warm jumper, lightweight jacket, closed-in shoes)
- November to May short sleeved tops & shorts will suffice (but a light weight jacket, pair of pants, etc. in the case of a cool evening)
- A torch
- Anything else that may tickle your fancy (i.e. guitar, games, books, etc)
- Spending money
- Personal journal
- Old clothes to be worn for excavations of bones

Accommodation

Volunteers staying onsite will be residing in shared tented accommodation with another volunteers. Bed, sheets, mosquito net, & a duvet/comforter is supplied. Amenities are basic. Electricity is available to recharge the likes of laptops, cameras and cell phones. Electricity in Ponta is one phase therefore hairdryers are not permitted.

Laundry

A hand washing area is available. Alternatively, you can pay one of the housekeeping staff to do laundry for you @ US\$10 per week.

Meals

All basic meals are included and you will be requested to prepare meals and do shopping with the weekly budget that is set out for catering.

In the Field with Dolphins, Whales and Turtles Volunteer Program

Cost:

- US\$1575 for a 4 week stay

What it includes:

- On site shared tented accommodation
- Basic meals
- Camp entry fee
- DolphinCare~Africa Gift Pack (3 t-shirts to be worn on duty, cap, Dca Volunteer certificate of attendance, Dvd with pictures and dolphin diaries of during your stay; dvd with information on our dolphins, research projects and interesting reference papers.
- Tour of Ponta do Ouro
- Field trips
- Invaluable experience working at sea, behavioural observations, data collection, photographic identification, educating the public
- DCA membership for one year
- Research contribution

Some Duties include but are not limited to:

- Pre-launch briefings for accompanying participants
- Educational briefings and turtle walks
- Boat based data capture (photographic, behavioural, etc.)
- Land based data (land based observations, data entry, fin identification, etc)
- Preparation of educational/information boards
- Marine animal strandings
- Bone/skeleton preparation and cataloguing

What you are responsible for & additional costs:

- Airfare and travel costs to/from Ponta do Ouro. Transfers from further location such as Maputo, Moçambique & Richards Bay, South Africa can be arranged on request (price dependent).
- One month visa
- Soft drinks, alcohol, etc.
- Dining out
- Any recreational activities you decide to take part in (kiting, surfing, scuba diving, bush excursions, etc.)
- Medical and travel insurance
- Spending money

Payment and Confirmation

Dca will confirm your booking shortly after your application has been received. Confirmation requires a 50% non-refundable deposit with the balance paid 2 weeks prior to arrival. If in the event you cannot uphold your commitment - a 3 month leeway is permitted under special circumstances. Payments are to be made into the below account. Email confirmation to angie@dolphincare.org

DolphnCare-Africa (section 21)
South AfricanBank: Nedbank
Branch: Buisness Direct
Acc number: 1469057964
Branch code: 146-905
Swift Bank Code: NEDSZAJJ

For further details please contact:-
Angie Gullan
Co-ordinating Director
Tel: +258 84 330 3859
Email: angie@dolphincare.org
Websites: www.dolphincare.org
www.dolphin-encountours.co.za

It is necessary for Interns to apply for a research permit in conjunction with UEM of NHM and Dolphincare-Africa. A standard application will be sent though for completion detailing your specific research aims and objectives.